

The Cancer Prevention and Control Research Network (CPCRN)

CPCRN Orientation & Becoming More Involved in the Network January 21, 2021

Stephanie B. Wheeler, PhD MPH
University of North Carolina at Chapel Hill
Principal Investigator, CPCRN Coordinating Center



@CPCRNcancer
@StephWheelerUNC

www.cpcrn.org

Agenda

- CPCRNR Overview, *Stephanie Wheeler*
- Progress Reporting and CPCRNR Website, *Rebecca Williams*
- CPCRNR Communications Plan, *Alexa Young*
- Workgroup Engagement, *Becky Lee*

CPCRN Overview

CPCRN Vision

Reduce the burden of cancer in U.S. populations and eliminate cancer disparities

CPCRN Mission

- Accelerate the adoption and implementation of evidence-based cancer prevention and control strategies in communities
- Enhance large-scale efforts to reach underserved populations and reduce their burden of cancer
- Deepen our understanding of the predictable processes that achieve those goals
- Develop the D&I workforce in cancer prevention and control

A Brief CPCRNC History

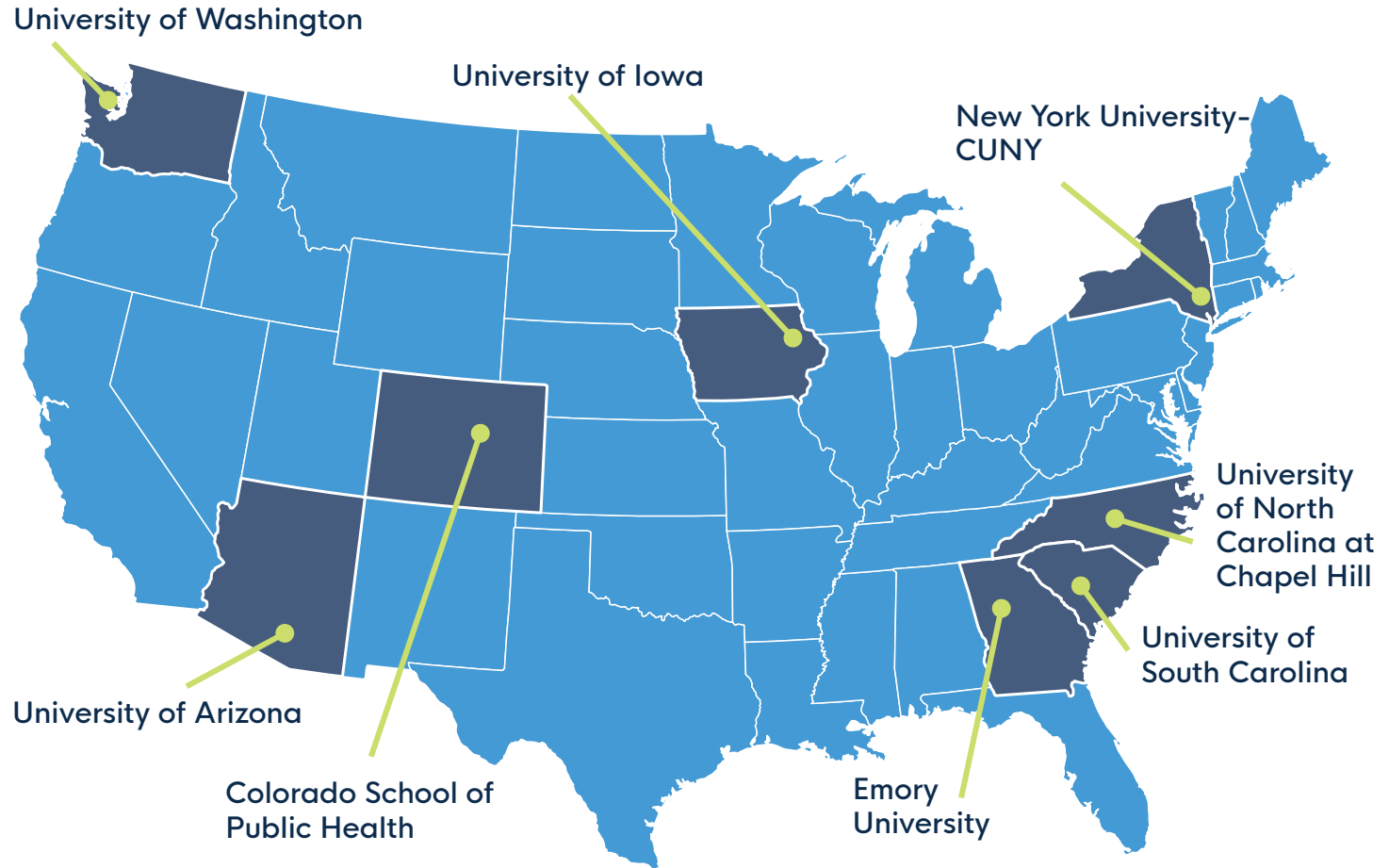
- The largest (and oldest) thematic research network of the CDC-funded Prevention Research Centers
- Conducts community-based participatory cancer research across network centers
- Pursues objectives of extending the knowledge base of research translation for evidence-based cancer control activities
- A network with broad geographic reach and strong relationships among investigators allows us to achieve more than any individual center could on its own



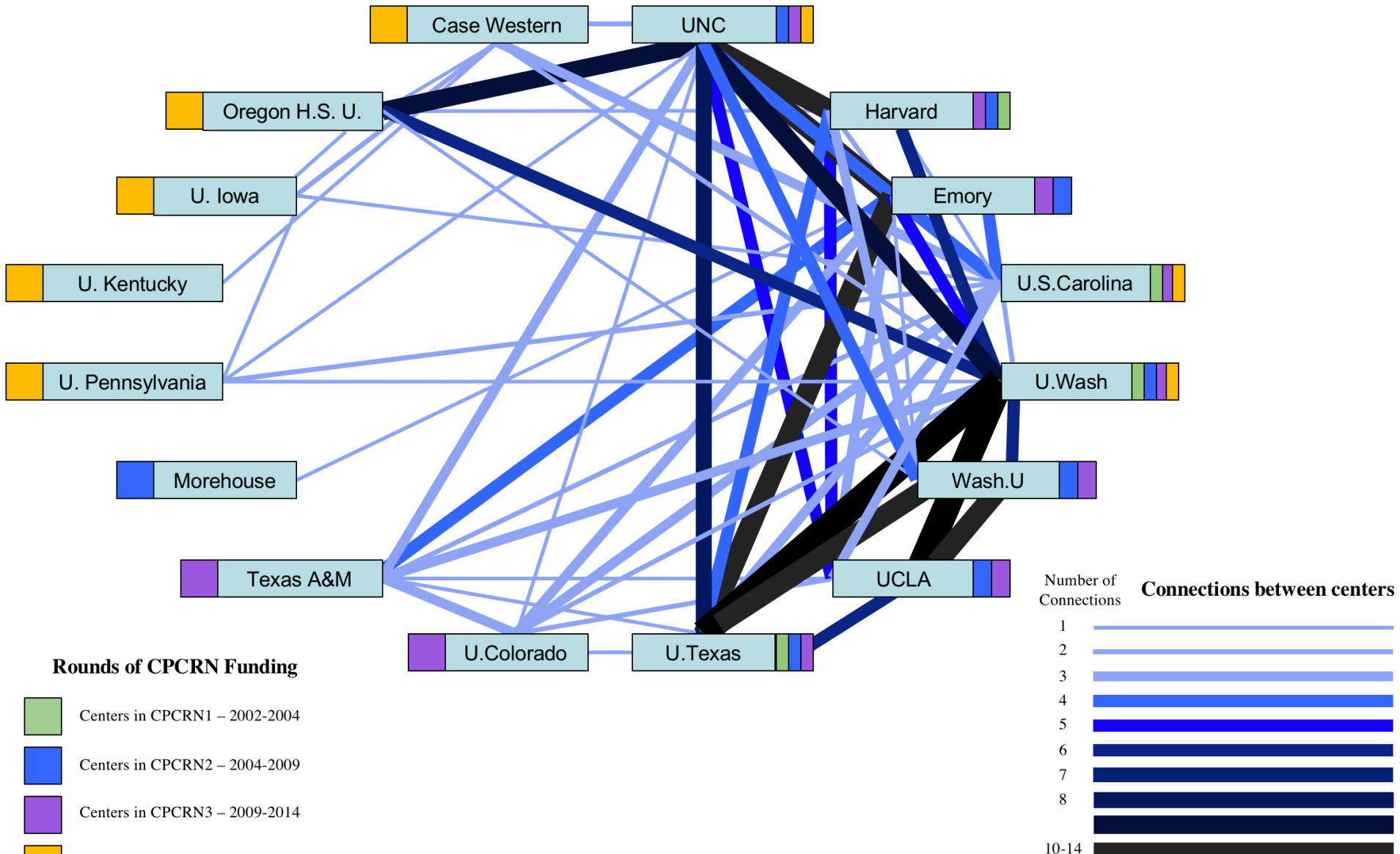
Funded CPCRN Centers

CPCRN1 2002-2004	CPCRN2 2004-2009	CPCRN3 2009-2014	CPCRN4 2014-2019	CPCRN5 2019-2024
University of Washington	University of Washington	University of Washington	University of Washington	University of Washington
University of South Carolina	Morehouse School of Medicine	University of South Carolina	University of South Carolina	University of South Carolina
University of Kentucky – West Virginia University	Emory University	Emory University	University of Kentucky	Emory University
Harvard University	Harvard University	Harvard University	University of Pennsylvania	New York University - City University of New York
University of Texas, Houston	University of Texas, Houston	University of Texas, Houston	Case Western Reserve University	University of Arizona
	University of North Carolina (Coordinating & Collaborating Centers)	University of North Carolina (Coordinating & Collaborating Centers)	University of North Carolina (Coordinating & Collaborating Centers)	University of North Carolina (Coordinating & Collaborating Centers)
	St. Louis University/Washington University in St. Louis	Colorado School of Public Health	Oregon Health & Science University	Colorado School of Public Health
	University of California, Los Angeles	University of California, Los Angeles	University of Iowa	University of Iowa
		Washington University in St. Louis		

CPCRN Network Map



Network Diagram: CPCRN Multicenter Publications 2004-2018





Chau Trinh-Shevrin, DrPH
New York University



Cyndi Thomson, PhD
University of Arizona



Betsy Risendal, PhD
Colorado School of Public Health



Cam Escoffery, PhD
Emory University



James R Hébert, ScD
University of South Carolina



Daniela Friedman, PhD
University of South Carolina



Peggy Hannon, PhD
University of Washington



Linda Ko, PhD
University of Washington



Natoshia Askelson, PhD
University of Iowa



Stephanie Wheeler, PhD
University of North Carolina



Jennifer Leeman, DrPH
University of North Carolina



Alison Brenner, PhD
University of North Carolina

Principal Investigators



Cancer Prevention and Control Research Network



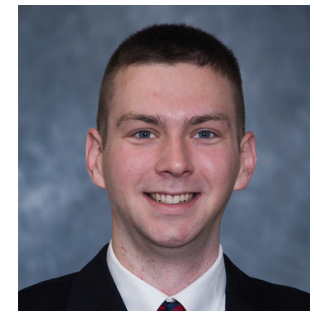
Emily Bilenduke, MA
Colorado School of Public Health



Victoria Foster, MPH
New York University



Julie Kranick, MA, MPhil
New York University



Sam Noblet, MPH
University of South Carolina



Rosi Vogel, BBA/MBA
University of Arizona



Heidi Haines, MS
University of Iowa



Thuy Vu, MPH
University of Washington



Christine Agnone, MPH
Emory University



Mary Wangen, MPH
University of North Carolina



Catherine Rohweder, DrPH
University of North Carolina



Becky Lee, MS
University of North Carolina

Project Directors



Cancer Prevention and Control Research Network

Coordinating Center Team

University of North Carolina at Chapel Hill



Stephanie Wheeler, PhD
Principal Investigator



Becky Lee, MS
Project Director



Rebecca Williams, PhD
Co-investigator



Alexa Young, MPH
Research Associate

CPCRN Strategic Plan

Updated March 2018

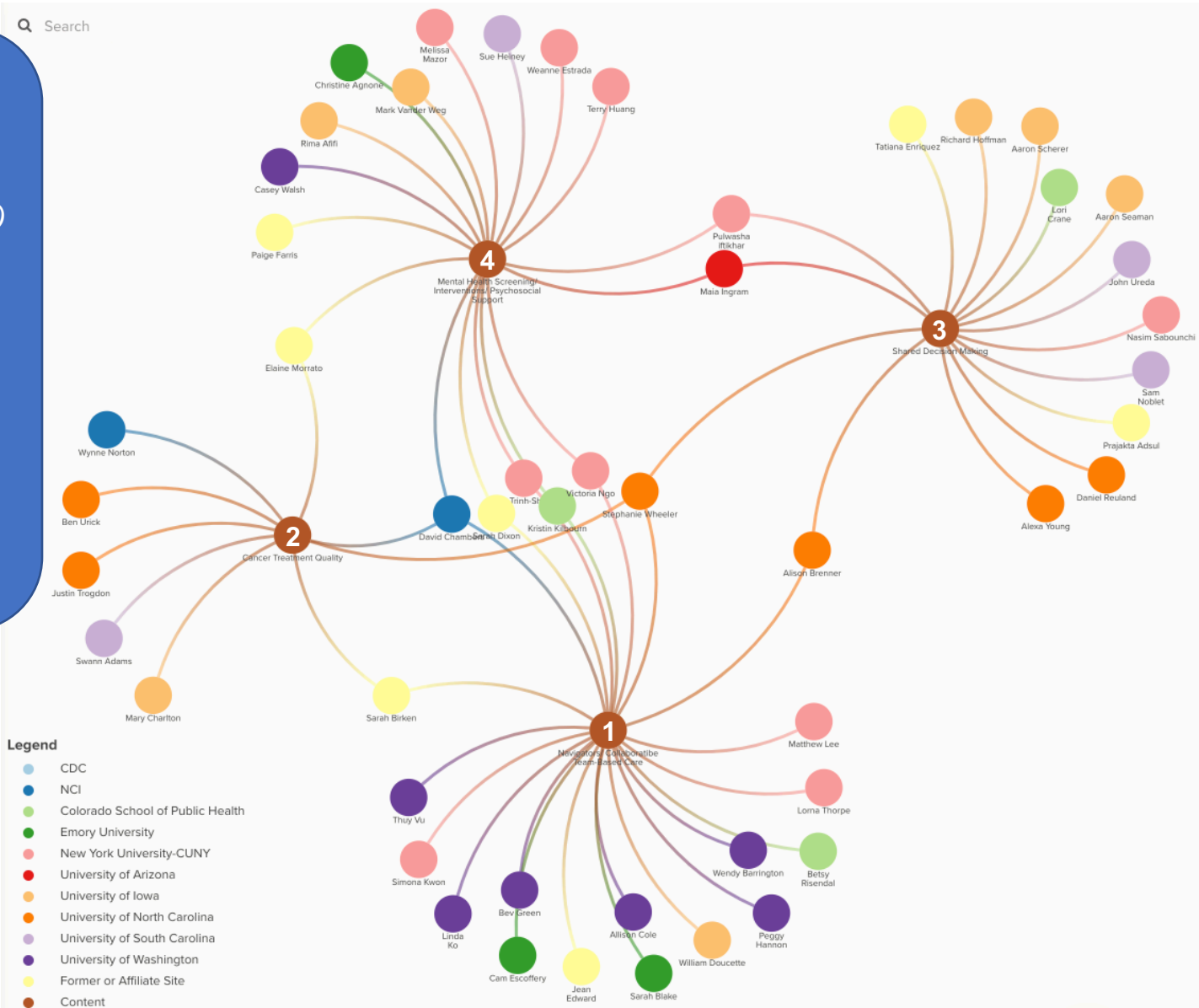
This document is used to guide the Network moving forward and to reflect on past Network activities.

<p>CPCRN aspires to...</p> <p><i>(Goals--Our timeliness aspirations, pursued continuously through different objectives)</i></p>	<p>We achieve these goals by:</p> <p><i>(Objectives--What are the SMARTER targets for which we will aim? Specific, Measurable, Achievable, Resourced, Timelined, Evaluated, Reported)</i></p>	<p>We address these objectives by:</p> <p><i>(Tactics--Specific actions that address how we will achieve our objectives)</i></p>	<p>We evaluate our success by:</p> <p><i>(Key Performance Indicators--PROCESS, IMPACT, PRODUCTS)</i></p>
<p>1. Advance the science of dissemination and implementation (D&I) of evidence-based cancer prevention and control (CPC) strategies, especially in underserved populations, in order to:</p>	<p>1.1 Conduct cross-center collaborative projects with broad CPCRN investigator engagement focused on:</p> <ul style="list-style-type: none"> • evaluating the implementation of existing CPC strategies in varying settings (e.g. FQHCs) • developing, testing, and implementing new evidence-based interventions <p>1.2 Each CPCRN workgroup, project & collaborating center will contribute multiple products including, but not limited to:</p> <ul style="list-style-type: none"> • Presentations at national and local conferences • Publications • One or more collaborative grant submissions • Toolkits • Training materials 	<p>a. Workgroups, projects, and centers will achieve research objectives through community-engaged research involving methods and strategies such as:</p> <ul style="list-style-type: none"> ○ capacity building ○ simulation modeling ○ community engagement ○ communication/dissemination ○ evaluation ○ non-clinical/clinical linkages ○ development and evaluation of D&I measures ○ intervention development ○ training and evaluation ○ survey development <p>b. Workgroup and project teams will meet regularly (based upon current activities/need) to advance their work</p> <p>c. Steering Committee meetings will be held monthly to facilitate potential cross-center collaborations and provide updates on existing workgroups and projects.</p>	<p><i>Process</i> – Extent of cross-center collaborations in workgroups and projects (including but not limited to number of cross-center meetings and related events); Progress towards collaborative and center-specific products (e.g., manuscript, abstract, and grant submissions)</p> <p><i>Impact</i> – Evidence of scientific community leadership by CPCRN investigators in developing D&I science (around CPC or more generally)</p> <p><i>Products</i> – Number of collaborative and center-specific research activities, including, but not limited to, accepted presentations, publications, and grants funded, demonstrating network collaboration and center-specific productivity</p>

CPCRN Kumu Relationship Map of Members' Areas of Content Expertise: Cancer Treatment

Content Expertise: Cancer Treatment
(represented by numbered brown dots; other dots represent CPCRN members)

1. Navigators/ Team-Based Care
2. Cancer Treatment Quality
3. Shared Decision Making
4. Mental Health/ Psychosocial Support



CPCRN Kumu Relationship Map of Members' Areas of Methods Expertise:

Research Facilitation

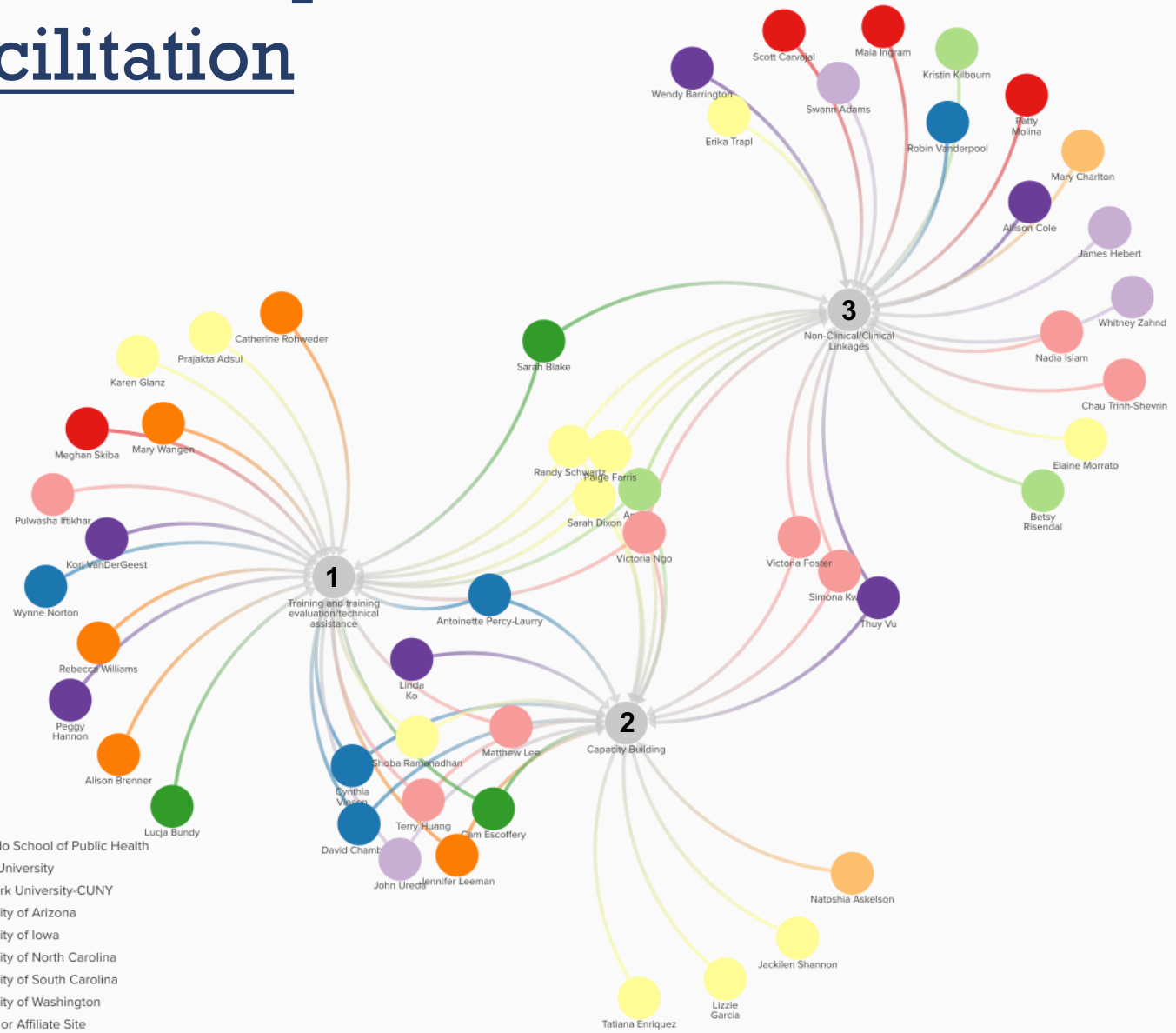
Search

Methods Expertise:
Research Facilitation
(represented by numbered
grey dots; other dots
represent CPCRN
members)

1. Training/Tech Assistance
2. Capacity Building
3. Non-Clinical Linkages

Legend

- CDC
- NCI
- Colorado School of Public Health
- Emory University
- New York University-CUNY
- University of Arizona
- University of Iowa
- University of North Carolina
- University of South Carolina
- University of Washington
- Former or Affiliate Site
- Content

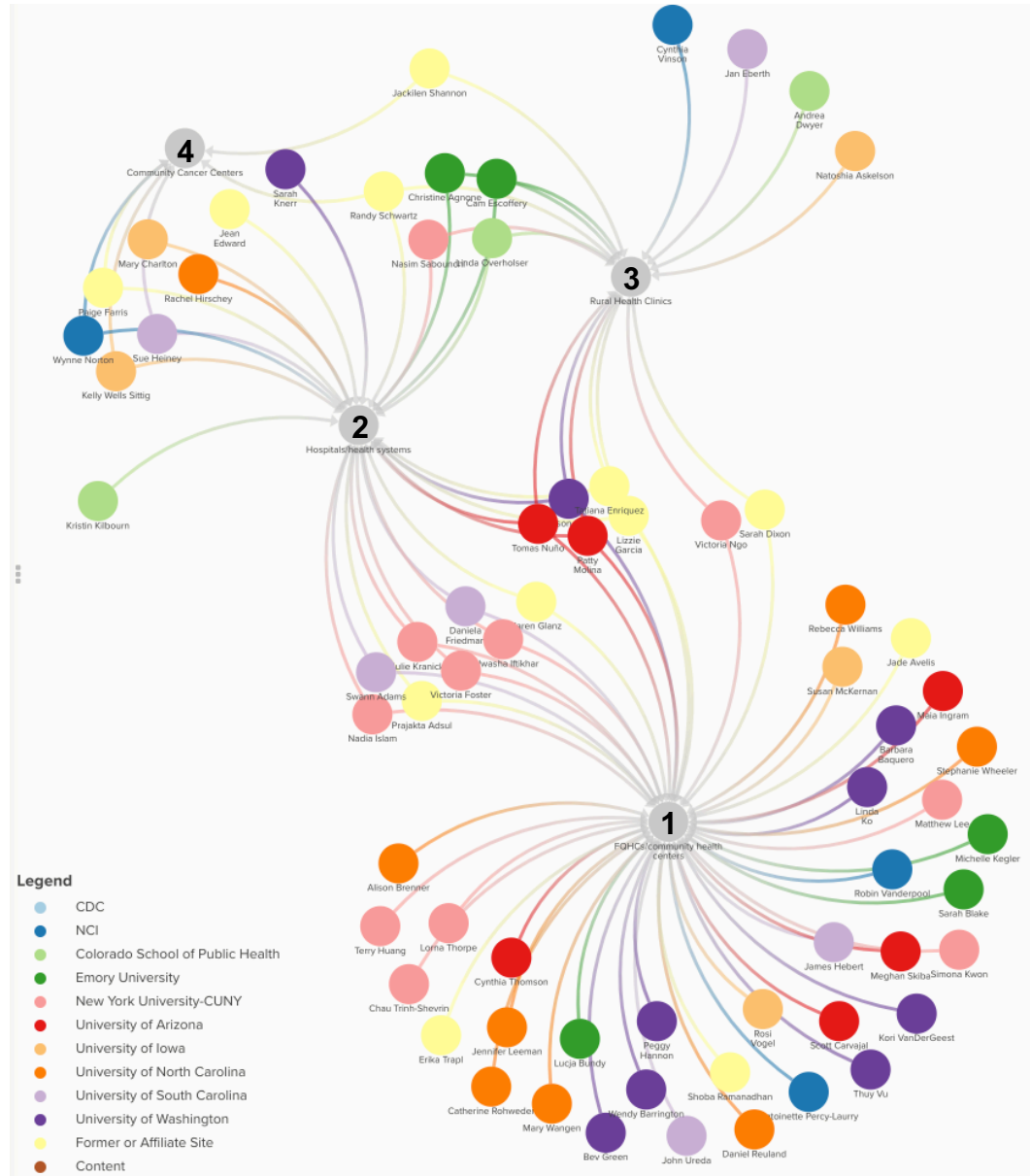


CPCRN Kumu Relationship Map of Members' Areas of Partner Expertise: Providers

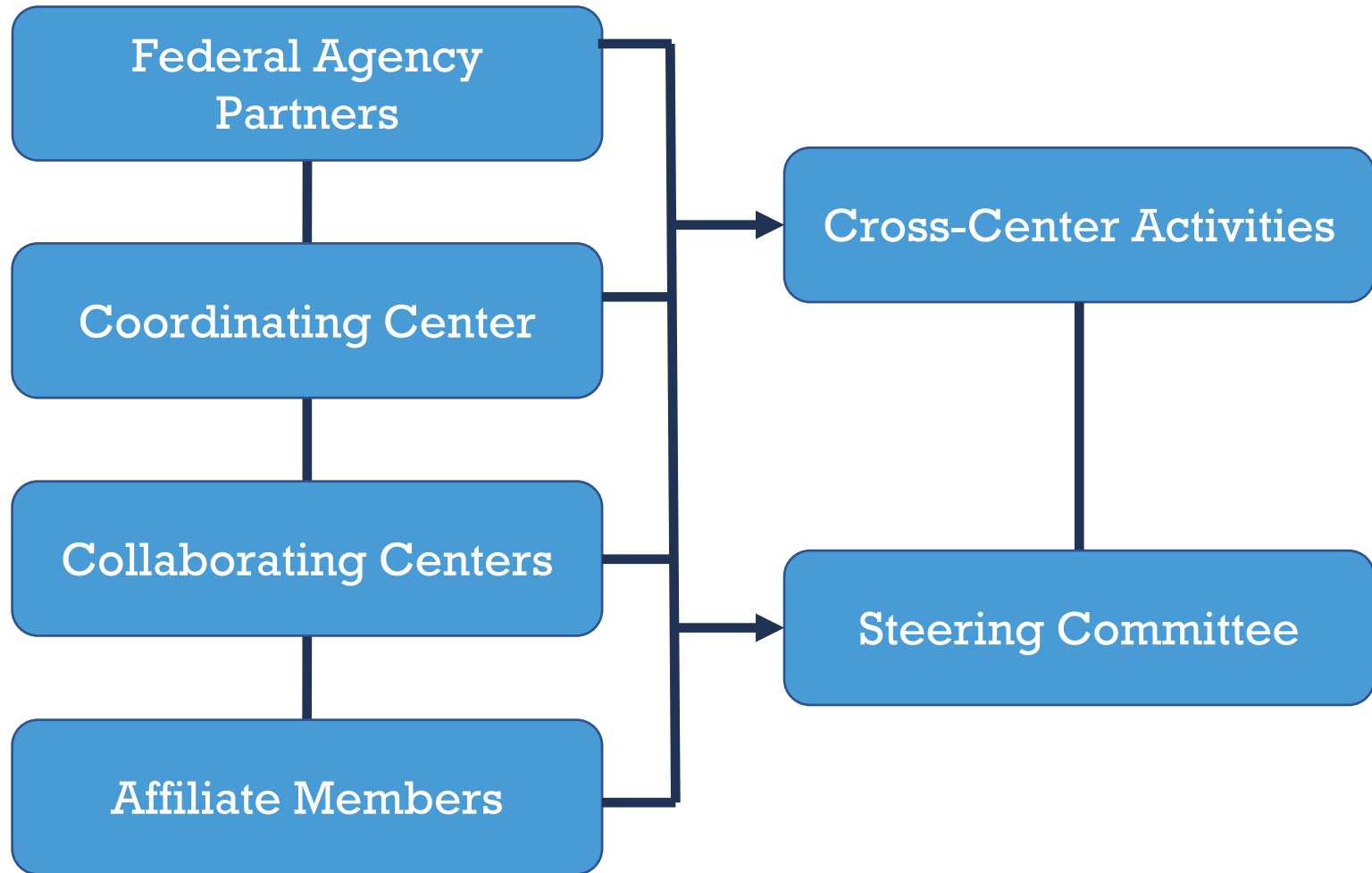
Setting/Partner Expertise: Providers

(represented by numbered grey dots; other dots represent CPCRN members)

1. FQHCs
2. Hospitals/Health Systems
3. Rural Health Clinics
4. Community Cancer Centers



CPCRN Organizational Structure



Opportunities to Become Involved in CPCRNR

1

Through **CPCRNR Cross-Center Activities**, Network members have an opportunity to collaborate across academic institutions and geographic boundaries around common topics of interest. Activities include Workgroups, interest groups, and ad hoc projects.

2

CPCRNR Affiliate Membership is open to investigators outside of collaborating centers who have interest in and capability to contribute to the mission and goals of CPCRNR. To apply, download the application form at www.cpcrn.org/member-resources?open_col=51, and send the completed form and a CV to beckylee@unc.edu.

3

The **CPCRNR Scholars Program** strives to educate students, postdoctoral fellows, junior faculty, practitioners, and other health professionals in dissemination and implementation (D&I) science focused on cancer prevention & control and health equity. To learn more, email christine.agnone@emory.edu and noblet@mailbox.sc.edu.

Overview of Current Cross-Center Activities

Survivorship

Rural
Cancer

iCollab

Organizational
Theory for
Implementation
Science

CPCRN
Scholars

Health
Behaviors

Cancer &
COVID-19

Cancer
Screening
Change
Package

Health Equity
& Social
Determinants
of Health

Modeling
Evidence-
Based
Intervention
Impact

Multiple
Cancer
Prevention
and Control

Contacts for Cross-Center Activities

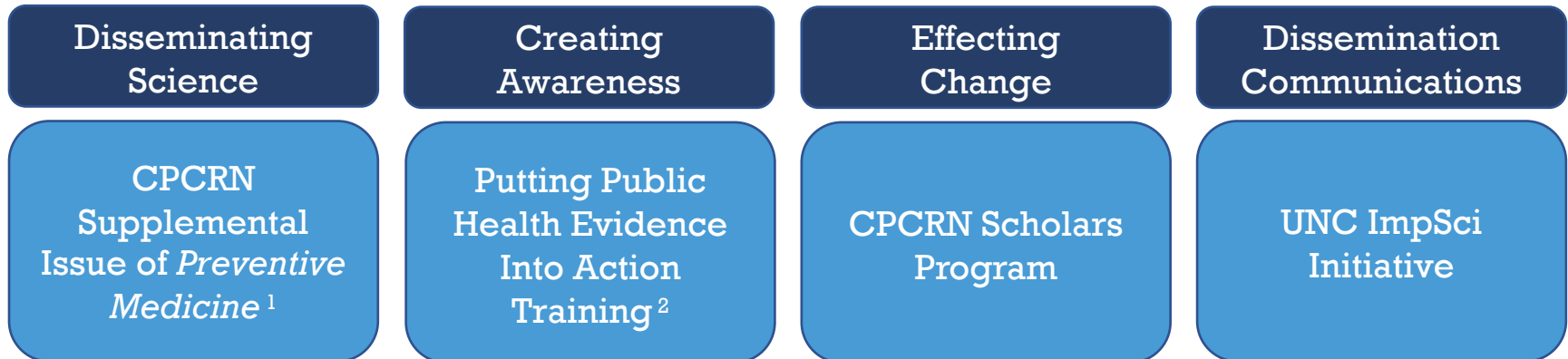
Activity	Project Director(s)	Email Address(es)
CPCRN Scholars	Christine Agnone Sam Noblet	christine.agnone@emory.edu noblet@mailbox.sc.edu
Health Behaviors	Thuy Vu	thuytvu@uw.edu
Health Equity & SDOH	Julie Kranick Victoria Foster	julie.kranick@nyulangone.org victoria.foster@nyulangone.org
iCollab	Catherine Rohweder Emily Bilenduke	rohwerder@email.unc.edu emily.bilenduke@ucdenver.edu
Organizational Theory for Implementation Science	Mary Wangen Alex Peluso	wange062@live.unc.edu apeluso@wakehealth.edu
Rural Cancer	Heidi Haines	heidi-haines@uiowa.edu
Survivorship	Rosi Vogel	rosimvogel@arizona.edu
Cancer Screening Change Package	Lindsay Stradtman	lindsay.stradtman@unc.edu
Multiple Cancer Prevention and Control	Jade Avelis	jade.avelis@pennmedicine.upenn.edu
Modeling EBI Impact	Sarah Drier	sarah.drier@unc.edu

Impact of CPCRNR

By the Numbers

CPCRNR5 Year 1	150 Publications	\$26.5M in Funded Grants	111 Presentations	16 Trainings
Since 2004	1,940 Publication	\$695M in Funded Grants	2,110 Presentations	70 Trainings* *past 4 years only

Beyond the Numbers



1. https://www.cpcrn.org/news?open_id=73
2. <https://www.cpcrn.org/training>

Impact of CPCRNR: *Beyond the Numbers Cont'd*

Disseminating Science

CPCRNR Supplemental Issue of *Preventive Medicine*

- 12-article issue, published in December 2019
- Contributions were made by investigators from all 8 participating Collaborating Centers in CPCRNR4
- Examined stakeholder-engaged implementation science and population approaches to improve equity in cancer prevention and control

Impact of CPCRNR: *Beyond the Numbers Cont'd*

Creating Awareness

Putting Public Health Evidence Into Action Training

- Developed during CPCRNR3 (2009-2014) funding cycle
- Interactive training curriculum designed to build practitioners' general capacity for evidence-based decision-making
- In the last year: 1,545 total pageviews; 1,079 (70%) of which were first-time visitors

Impact of CPCRNR: *Beyond the Numbers Cont'd*

Effecting Change

CPCRNR Scholars Program

- Developed during CPCRNR5, Year 1 (2020)
- Established to educate students, postdoctoral fellows, junior faculty, practitioners, and other health professionals in dissemination and implementation (D&I) science, with a focus on cancer prevention & control and health equity.

Impact of CPCRNR: *Beyond the Numbers Cont'd*

Dissemination Communications

UNC ImpSci Initiative

- Established in the previous funding year (CPCRNR5 Year 1) as an initiative to raise awareness of IS research happening within UNC
- In the last year, the Twitter account, @UNCImpSci:
 - Gained 1,000+ new followers
 - Launched 3 major campaigns about IS-related events occurring at or in collaboration with UNC

Progress Reporting and CPCR N Website

CPCRN Progress Reporting: Overview of Reporting Obligations

- The network progress report includes:
 - 1) Individual Network center reporting
 - 2) Workgroup reporting
 - 3) Coordinating Center reporting
- Due yearly on **December 15th** for the previous **September 30th-September 29th** grant period.

What Needs to Be Reported:

Publications	Presentations	Research Activities	Mini-Grants
Grant Applications	Awards/ Honors	Trainings	Requests for Scientific Expertise
Activities that Catalyze Action/ Effect Change	Dissemination Communications	Reports, Plans, and Policies	Quotable Feedback and Anecdotes

CPCRN

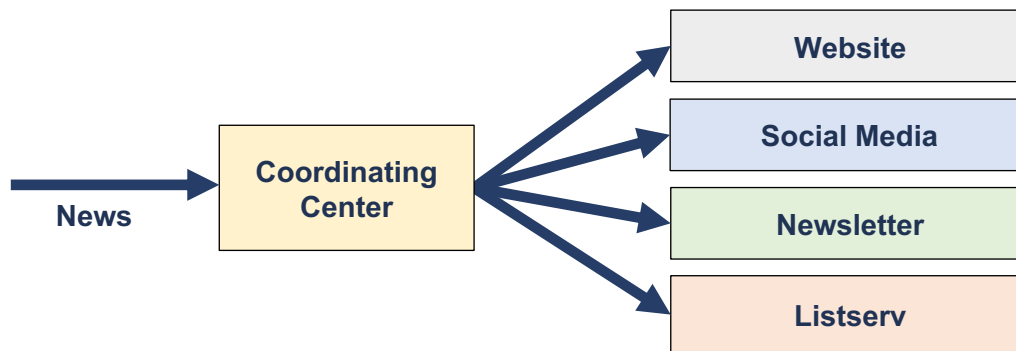
Communications Plan

CPCRN Communications Plan

Goal: Promote broader awareness of, and engagement with CPCRN through strategic and effective dissemination of research related to cancer prevention & control and D&I science, with the aim of enhancing the reputation of the Network as a national leader in these fields.

Communications Channels:

- Scientific Publications and Presentations
- CPCRN Website (www.cpcrn.org)
- Social Media: Twitter (@CPCRNCancer); Facebook (@CPCRN)
- Quarterly CPCRN Newsletter
- CPCRN Listserv



Workgroup Engagement

Workgroup Engagement

Workgroup member roles may include, but are not limited to:

- Development and management of IRB applications
- Research design, recruitment, qualitative/quantitative data collection/analysis
- Contacting and engaging partner organizations
- Drafting and reviewing abstracts, presentations, and manuscripts
- Grant proposals
- Trainings/workshops
- Intervention development and evaluation
- Attendance at national conferences, stakeholder meetings, and other public venues to present CPCRn work

Collaborating centers contribute resources towards Workgroup expenses (i.e. participant incentives, transcription, and publication fees, among others).

Connect with CPCRNC:



Find us on the web:
www.CPCRNC.org



Follow us on Twitter:
[@CPCRNCancer](https://twitter.com/CPCRNCancer)



Like us on Facebook
[@CPCRNC](https://www.facebook.com/CPCRNC)

Questions?

Stephanie B. Wheeler, PhD MPH

Principal Investigator
CPCRNC Coordinating Center
919.966.7374

stephanie_wheeler@unc.edu
 [@StephWheelerUNC](https://twitter.com/StephWheelerUNC)

Becky Lee, MS

Project Director
CPCRNC Coordinating Center
919.966.2812
beckylee@unc.edu